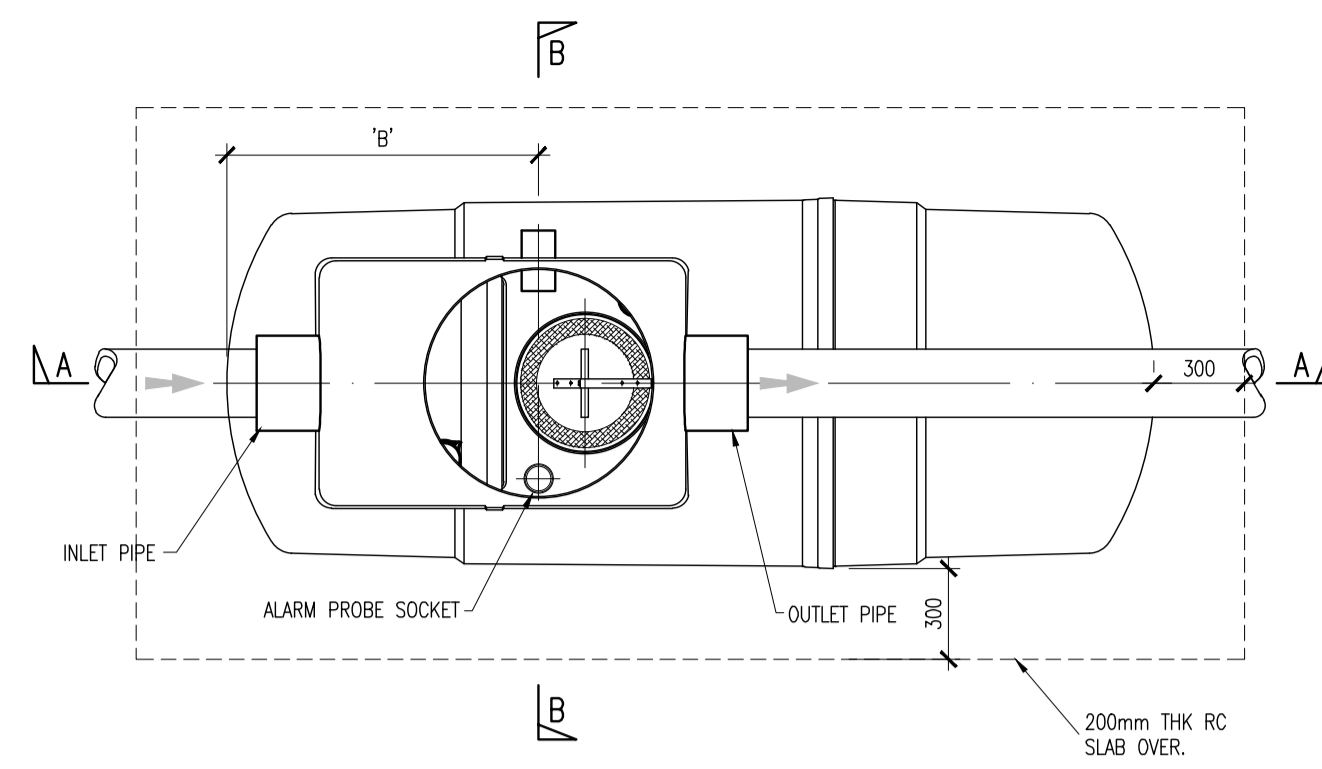
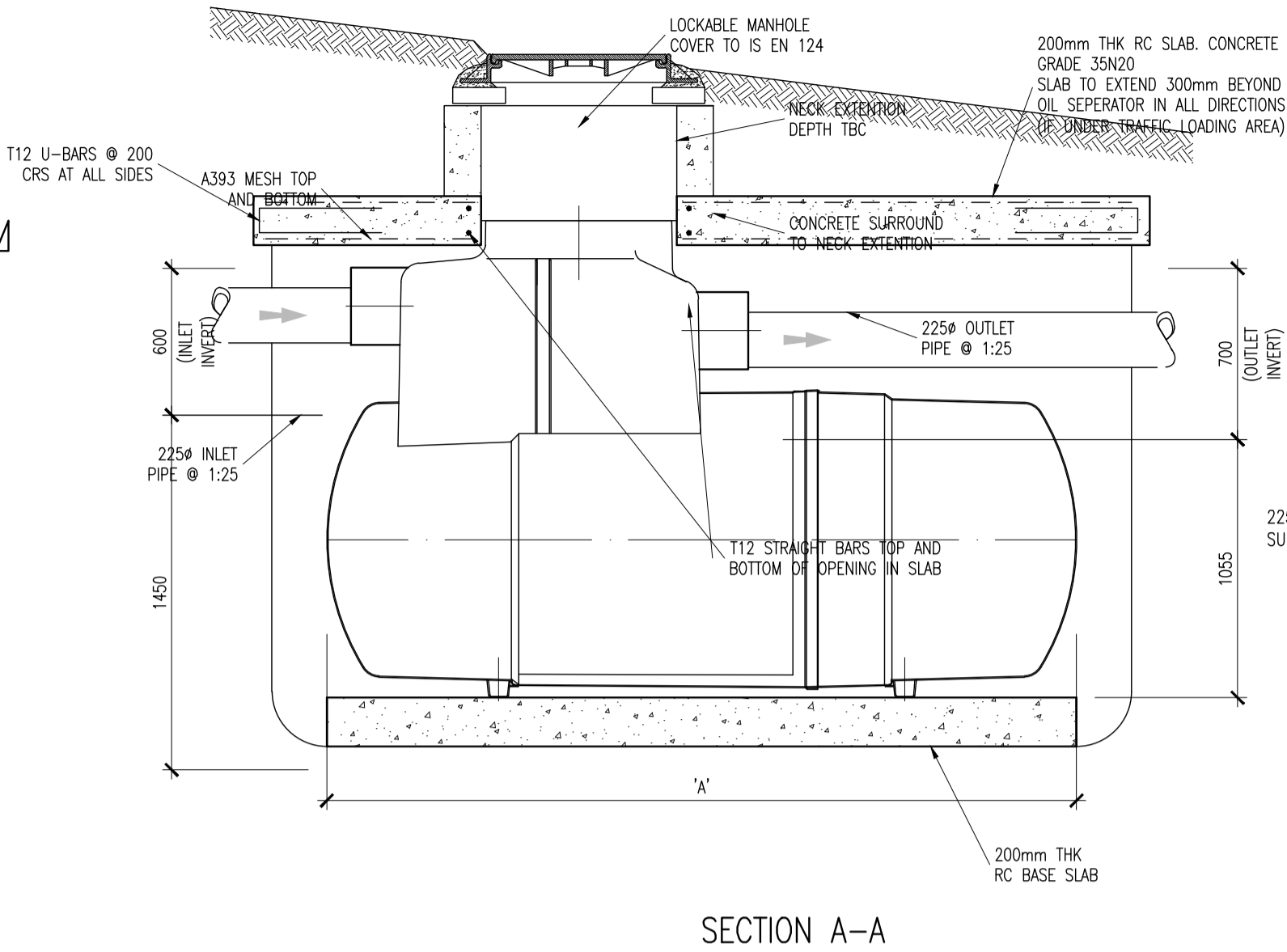


FLOW CONTROL MANHOLE DETAIL
SCALE 1:25

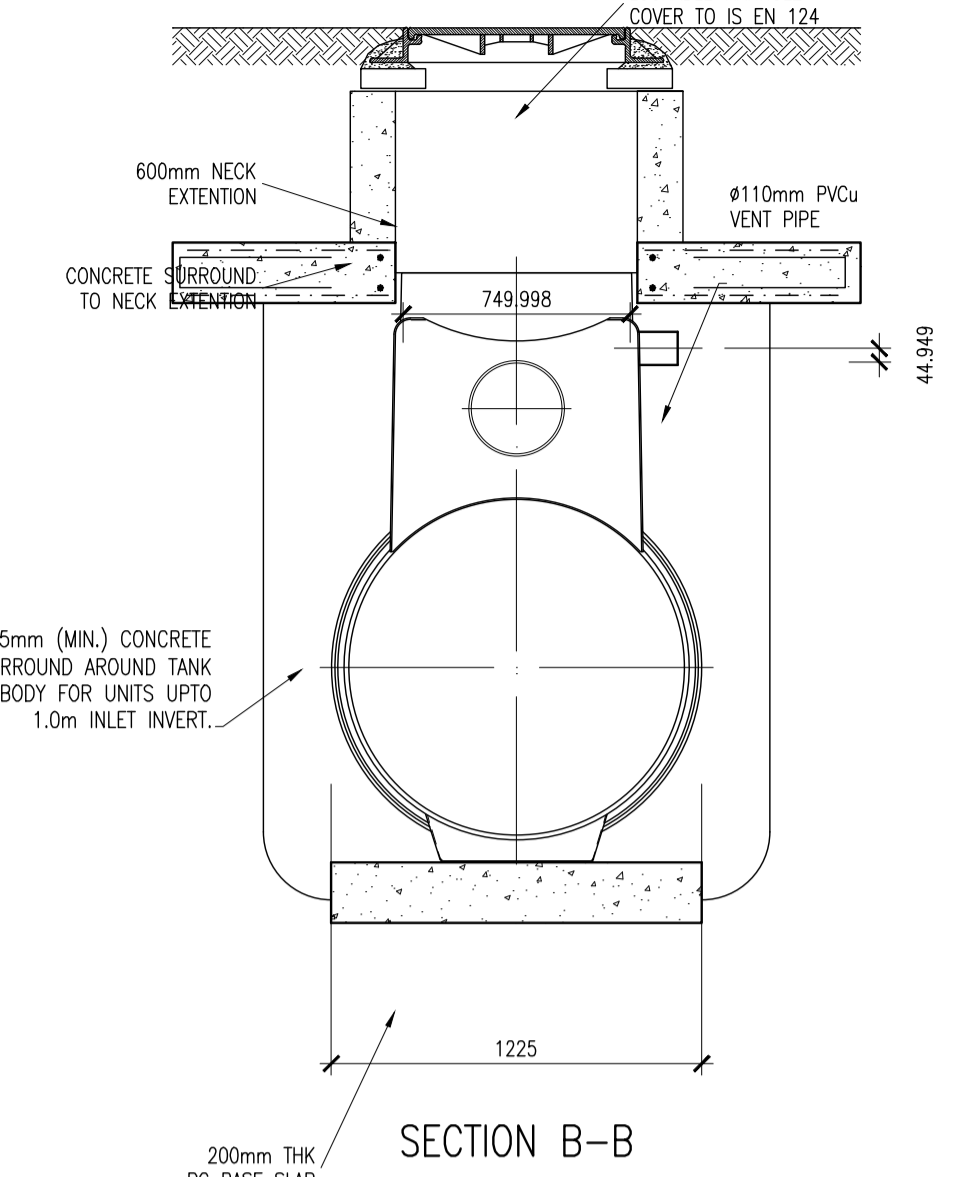


PLAN

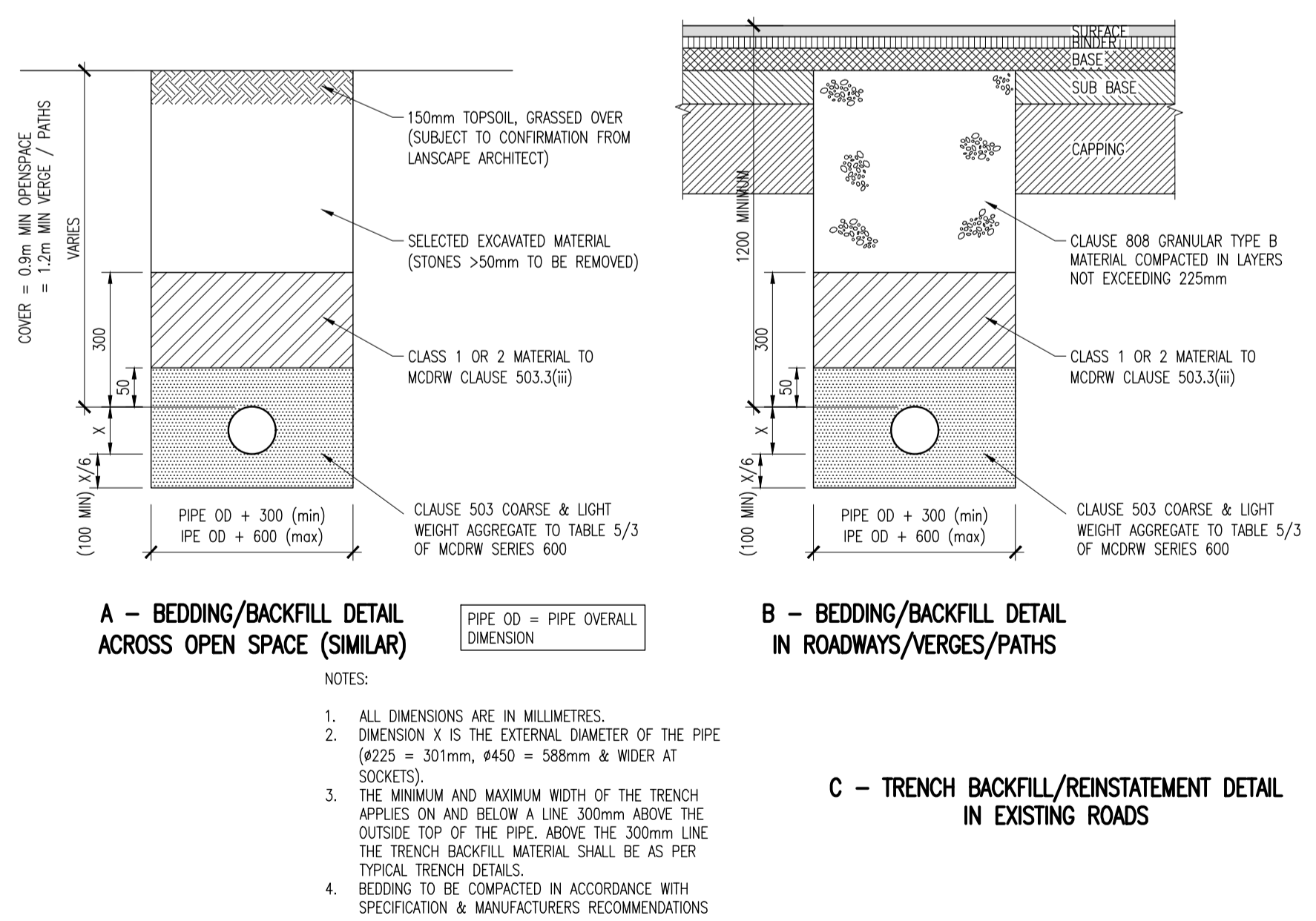
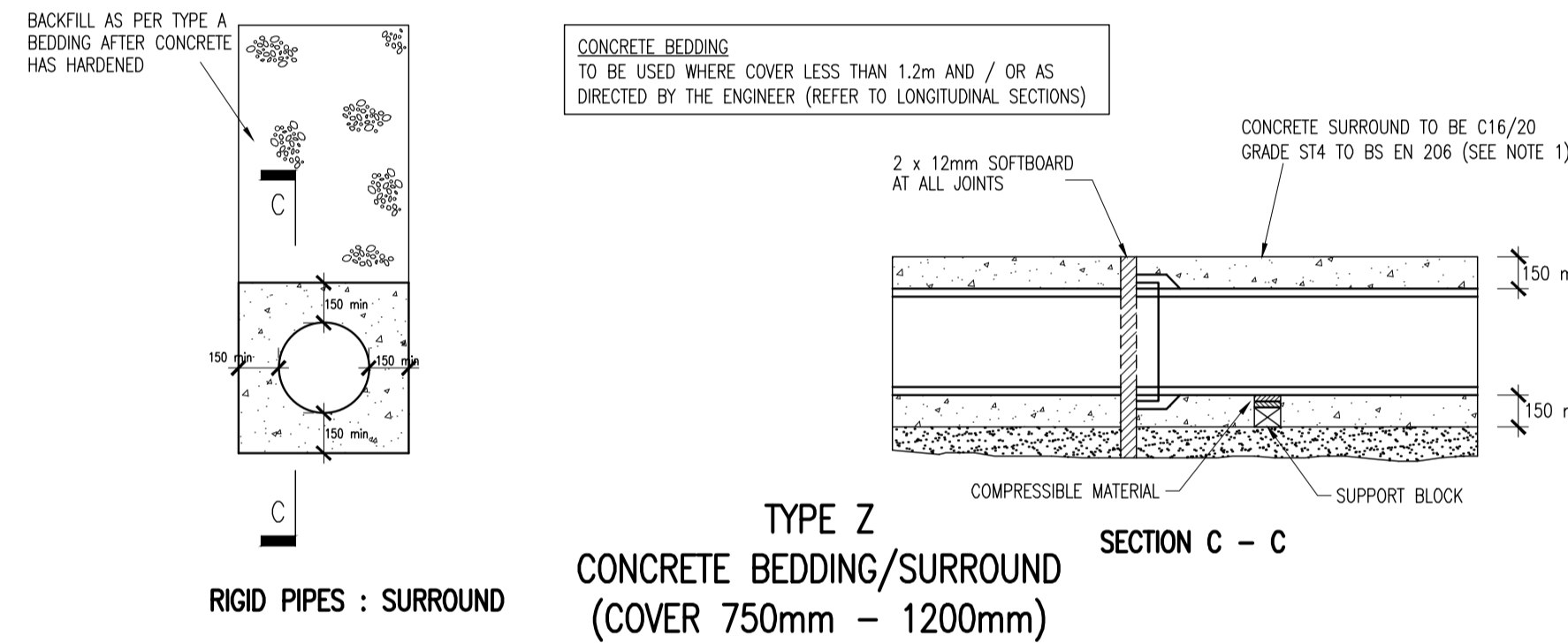
UNIT REF No.	NOMINAL FLOW	DIM 'A'	DIM 'B'	STD. PIPE
NSB015	15 L/S	3893	1220	375



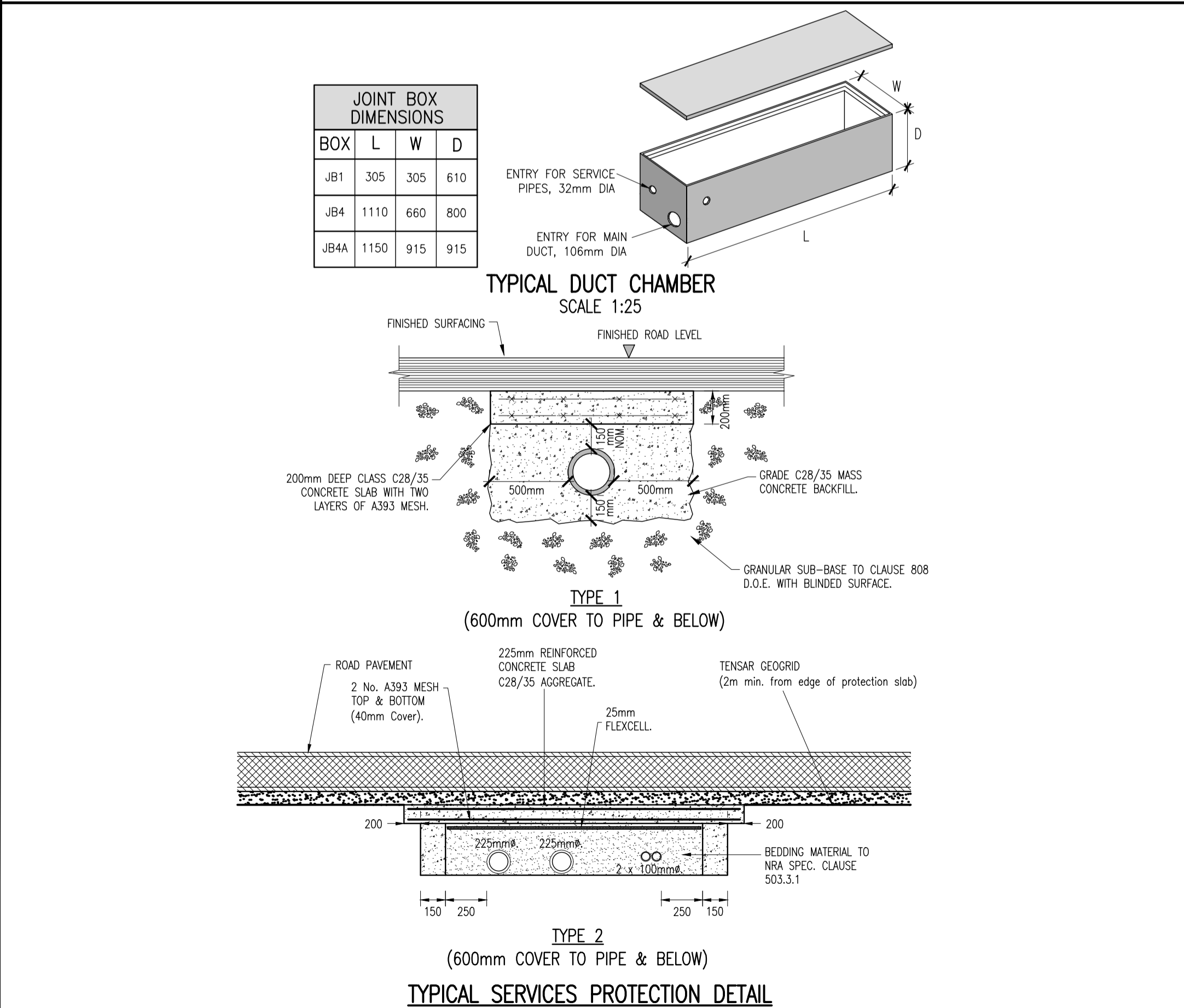
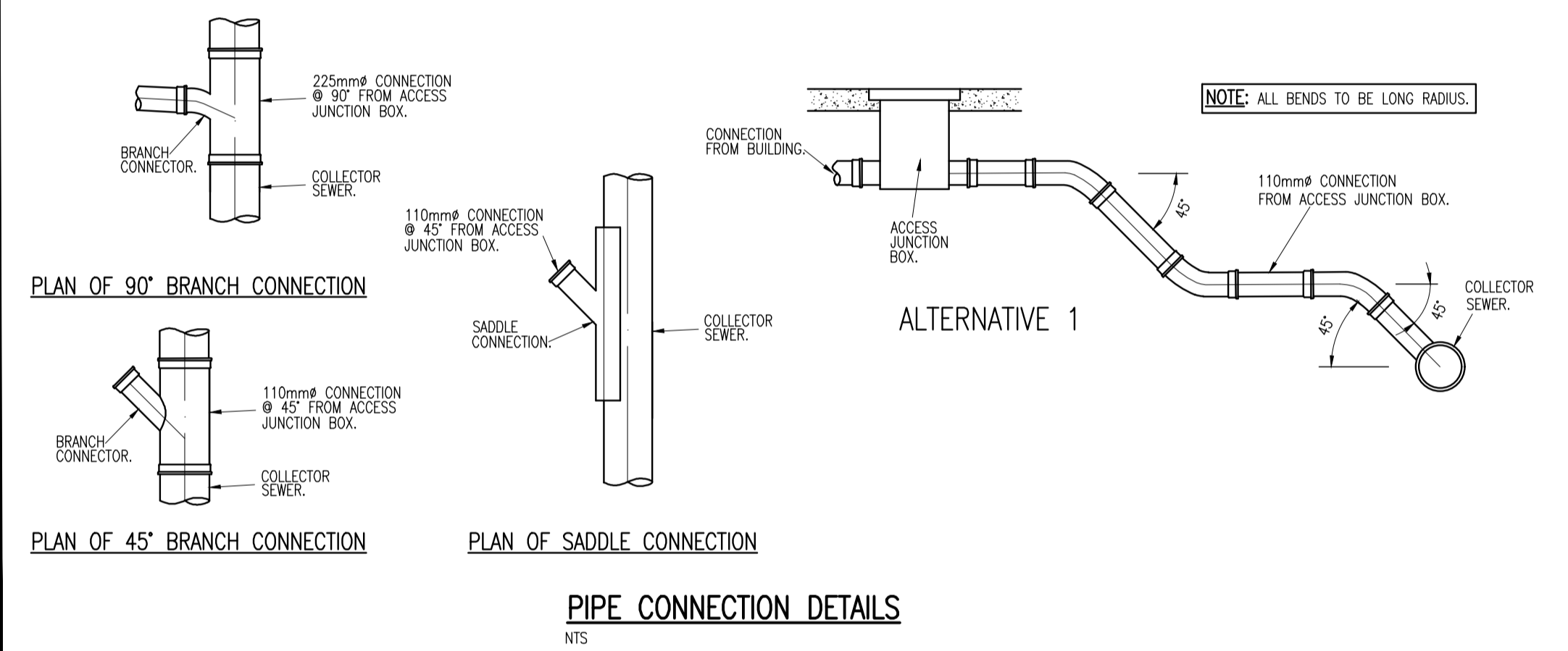
BY-PASS INTERCEPTOR DETAIL
SCALE 1:25



- GENERAL NOTES:
- ALL SURFACE WATER MANHOLES AND DRAINAGE ARE TO BE CONSTRUCTED IN ACCORDANCE WITH THE REQUIREMENTS OF THE GREATER DUBLIN CODE OF PRACTICE FOR DRAINAGE WORKS.
 - ALL FOUL DRAINAGE WORKS TO BE IN ACCORDANCE WITH IRISH WATERS' CODE OF PRACTICE FOR WASTEWATER SUPPLY AND WASTEWATER INFRASTRUCTURE STANDARD DETAILS.
 - SURFACES FINISHES FOR CONCRETE:
 - CLASS F1 FOR ALL CONCRETE 100mm OR MORE BELOW GROUND LEVEL.
 - CLASS F3 FOR ALL EXPOSED CONCRETE ABOVE 100mm BELOW GROUND LEVEL.
 - ALL EXPOSED CORNERS ON CONCRETE SHALL BE CHAMFERED WITH 25mm x 25mm CHAMFERS.
 - ALL STRUCTURAL CONCRETE (HEADWALLS, RC MANHOLES, PETROL INTERCEPTOR SLABS) TO RECEIVE MC DUR 1680 (OR SIMILAR APPROVED TAR MODIFIED EPOXY RESIN) TO ALL BURIED SURFACES. TO FINISH 100mm BELOW GROUND LEVEL.
 - ALL SEWERS SHALL BE PRESSURE TESTED PRIOR TO BACKFILLING.
 - TYPE 1 GRANULAR MATERIAL - BROKEN STONE OR GRAVEL TO PASS 10mm SIEVE AND BE RETAINED ON 5mm SIEVE. TYPE 2 GRANULAR MATERIAL - BROKEN STONE OR GRAVEL TO PASS 10mm - 25mm SIEVE, ACCORDING TO PIPE SIZE, (SEE TABLE) AND BE RETAINED ON 5mm SIEVE.
 - TYPE 3 SELECTED FILL - UNIFORM READILY COMPACTED MATERIAL FREE FROM TREE ROOTS, VEGETABLE MATTER, BUILDING DEBRIS, AND FROZEN SOIL AND EXCLUDING CLAY LUMPS, RETAINED ON A 75mm SIEVE AND STONES RETAINED ON A 37.5mm SIEVE.
 - ALL LADDERS, RUNGS, SAFETY CHAINS etc SHALL BE HOT DIPPED GALVANISED TO BS 729 OR EQUIVALENT.



PIPE BEDDING DETAILS
SCALE 1:25



rev	date	ISSUED FOR PLANNING	JIB	BK
P01	04-11-19	ISSUED FOR PLANNING		
rev	date	description	by	chkd.
		A - Approved		
		B - Approved with comments		
		C - Do not use		

client approval

suitability S2 - INFORMATION

issue purpose PLANNING

DBFL Consulting Engineers
Civil, Structural & Transportation Engineering
www.dbfl.ie

DUBLIN OFFICE Ormond House, Upper Ormond Quay, Dublin 7, Ireland
PHONE +353 1 400 4000

WATERFORD OFFICE Unit 2, The Chandry, 1-2 O'Connell Street, Waterford, Ireland
PHONE +353 51 309 500

project ref.

RESIDENTIAL DEVELOPMENT
SCHOLARSTOWN

drawing title
TYPICAL DRAINAGE DETAILS SHEET
2

architect
JOHN FLEMING ARCHITECTS

designed by	author	scale	sheet size
SB	JIB	AS NOTED	A1

drawing no. SCH-DBF-ZZ-XX-DR-C-3111 P01